



CREATIVE
COLOUR
AWARDS

Brought to you by



A colourful collection from
Creative Colour Awards

VIBES

CONTENT

1 Architectural

Corporate and Commercial Exterior	2024 Entries 2023 Entries	004 - 037 038 - 051
Residential Exterior	2024 Entries 2023 Entries	052 - 069 070 - 083

2 Interior Design

Corporate and Commercial Interior	2024 Entries 2023 Entries	084 - 125 126 - 179
Residential Interior	2024 Entries 2023 Entries	180 - 217 218 - 243

3 Public Spaces

2023 Entries	244 - 257
--------------	-----------

4 Hybrid Spaces

2024 Entries	256 - 271
--------------	-----------



ARCHITECTURAL

Corporate & Commercial

2024 ENTRIES



Best of Architectural Category

(Corporate & Commercial Exterior)

SAMA Square

📍 Kuala Lumpur, Malaysia

SAMA Square, nestled in the bustling heart of Setapak, Kuala Lumpur, is a groundbreaking project by Skyworld Development Sdn Bhd that redefines communal spaces through a kaleidoscope of colors. This vibrant hub, designed to foster togetherness and celebrate life, is a testament to the transformative power of color in architecture and communal living. By integrating shopping, dining, market, and activity spaces, SAMA Square emerges as a beacon of community spirit and a model for future urban developments.

Nippon Paint Colour Codes

Nippon Paint Weatherbond Advance | Husky Fur (NP PRO 0514)
Nippon Paint Weatherbond Advance | Grey Dove (NP PRO 0553)
Nippon Paint Weatherbond Advance | Charcoal Grey (NP PRO 0554)
Nippon Paint Weatherbond Advance | Capitol's Gold (NP YO 1169 D)
Nippon Paint Weatherbond Advance | Brunette (NP R 1365 A)
Nippon Paint Weatherbond Advance | Torrents (NP BGG 1758 D)
Nippon Paint Weatherbond Advance | Slate Crest (NP BGG 1807 D)
Nippon Paint Weatherbond Advance | Tempest Sea (NP AC 2107 A)
Nippon Paint Easywash | Tempest Sea (NP AC 2107 A)
Nippon Paint Easywash | Brunette (NP R 1365 A)

Submitted by _____ Tan Kwon Chong Architect



Aerial view of SAMA Square showing vibrantly coloured retail and market spaces uniting under one roof.

View towards individual retails with drop off. A place where everyone get together and celebrate life.



Market place with community & people's
plaza connecting the food stalls and
clustered landscape retails.



Independent Facade details of the individual retail units with layering of colours.



Architectural Category
(Corporate & Commercial Exterior)

Rumah Seri Kenangan

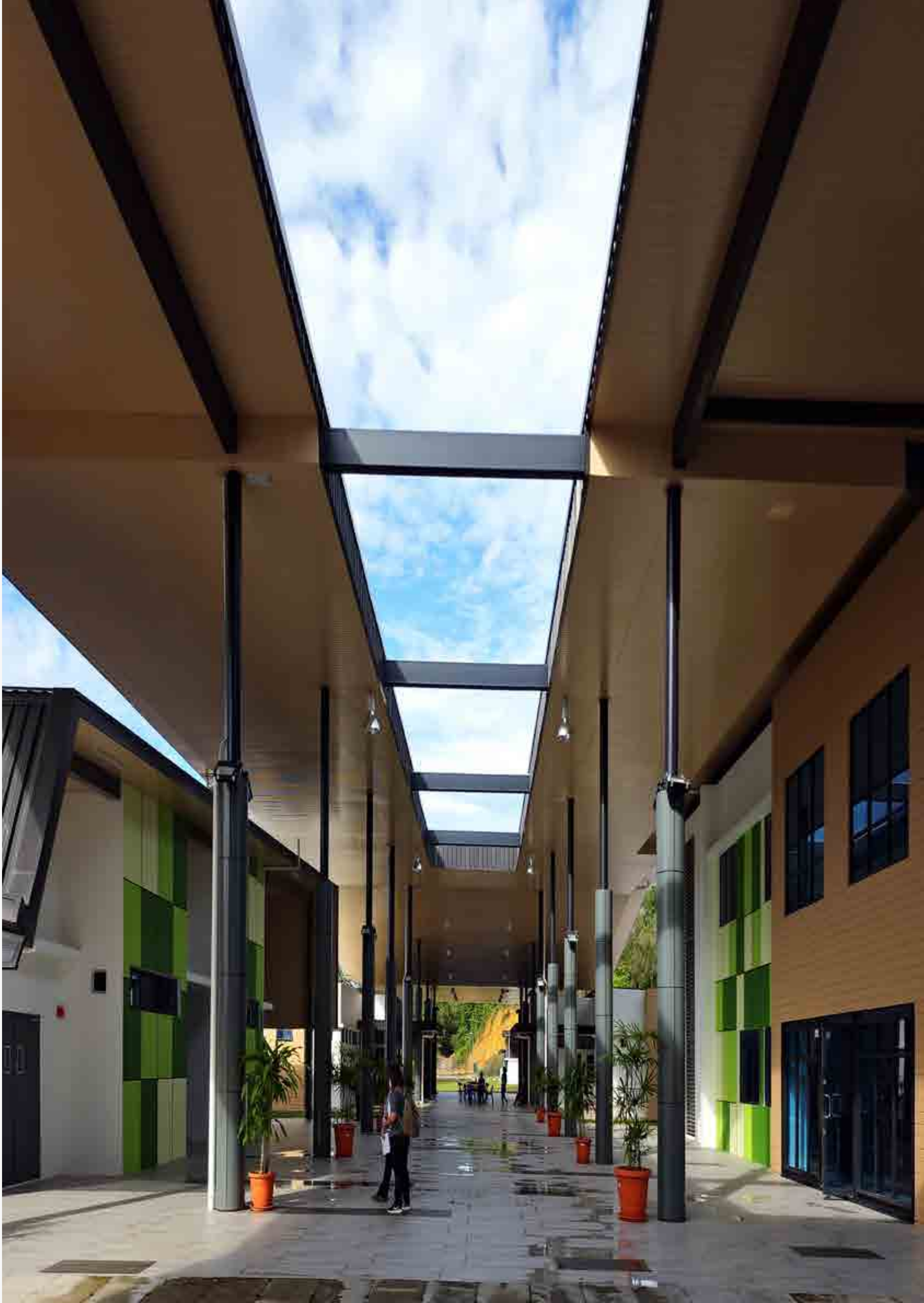
📍 Sarawak, Malaysia

The project, spearheaded by Jabatan Kerja Raya Sarawak in collaboration with Jabatan Kebajikan Masyarakat, is dedicated to the revitalization of the Rumah Seri Kenangan (Old Folks Home) in Sibu, Sarawak. Erected in the early 1970s, the current infrastructure has weathered over four decades, demanding a comprehensive overhaul to furnish contemporary conveniences and a friendly residential milieu for its aged inhabitants.

Nippon Paint Colour Codes

- Nippon Paint Weatherbond | IN THE BUFF 309
- Nippon Paint Weatherbond | WOODGROVE 9574
- Nippon Paint Weatherbond | BLUE BREEZE NP BGG 1585 P
- Nippon Paint Weatherbond | OCEAN CALM NP BGG 1583 D
- Nippon Paint Weatherbond | SAXONY BLUE NP BGG 1582 A
- Nippon Paint Weatherbond | WHITE 145
- Nippon Paint Weatherbond | FERN TIP NP BGG 1684 P
- Nippon Paint Weatherbond | LILTING GREEN NP BGG 1779 D
- Nippon Paint Weatherbond | CLIMBING VINE NP BGG 1785 A
- Nippon Paint Timbershade | SILHOUETTE GRAY 4223D
- Nippon Paint 9000 | PAPIER GREY 1139
- Nippon Paint Super Matex | WHITE 9102

Submitted by _____ Arkitek Seniformasi





Architectural Category
(Corporate & Commercial Exterior)

SJK (C) Chung Wa Gerik

📍 Perak, Malaysia

The Persatuan Ibu Bapa Dan Guru (PIBG) of SJK (C) Chung Wa in Gerik has successfully completed a 3-storey educational building with a budget sourced from public donations. Designed to accommodate approximately 200 students, this new addition provides space for regular classes and extracurricular activities.

The building features 6 classrooms, 6 washrooms, and a versatile canteen that doubles as a venue for events and activities.

Nippon Paint Colour Codes

- Nippon Paint Weatherbond | Brilliant White (1001)
- Nippon Paint Weatherbond | Lime Time (NP BGG 1673 A)
- Nippon Paint Weatherbond | Sashay Red (NP R 1260 A)
- Nippon Paint Weatherbond | Cheers (NP AC 2061 A)
- Nippon Paint Weatherbond | Jumping For Joy (NP YO 1127 A)
- Nippon Paint Weatherbond | Yellow Grass (NP BGG 1685 T)
- Nippon Paint Weatherbond | Quiet Lake (NP BGG 1593 P)
- Nippon Paint Weatherbond | Classical Blue (NP BGG 1581 D)
- Nippon Paint Weatherbond | Sweet Deal (NP R 1306 P)
- Nippon Paint Weatherbond | Crimson Tide (NP R 1310 D)
- Nippon Paint Weatherbond | Exotic Bloom (NP R 1296 D)
- Nippon Paint 9000 Gloss Finish | Silhouette Gray (N 1898D)
- Nippon Paint 9000 Gloss Finish | Ash Grey (1306)
- Nippon Paint Timbershade | Bedford (134A)

Submitted by _____ Lee Jin Liang Architect





Stark white walls provide a crisp backdrop, allowing the colors to stand out.



Architectural Category

(Corporate & Commercial Exterior)

商店街のツリーハウス Treehouse

📍 Tokyo, Japan

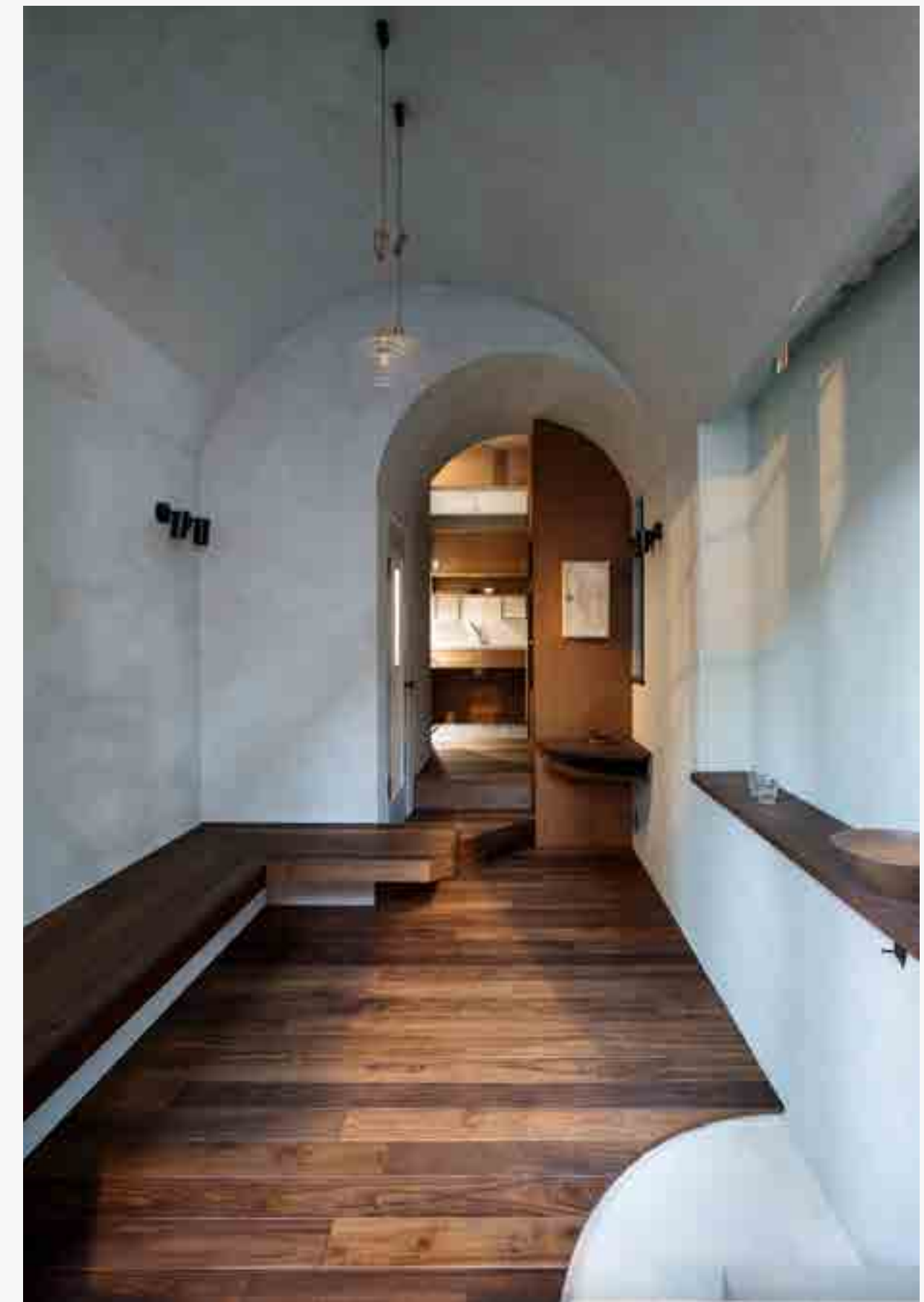
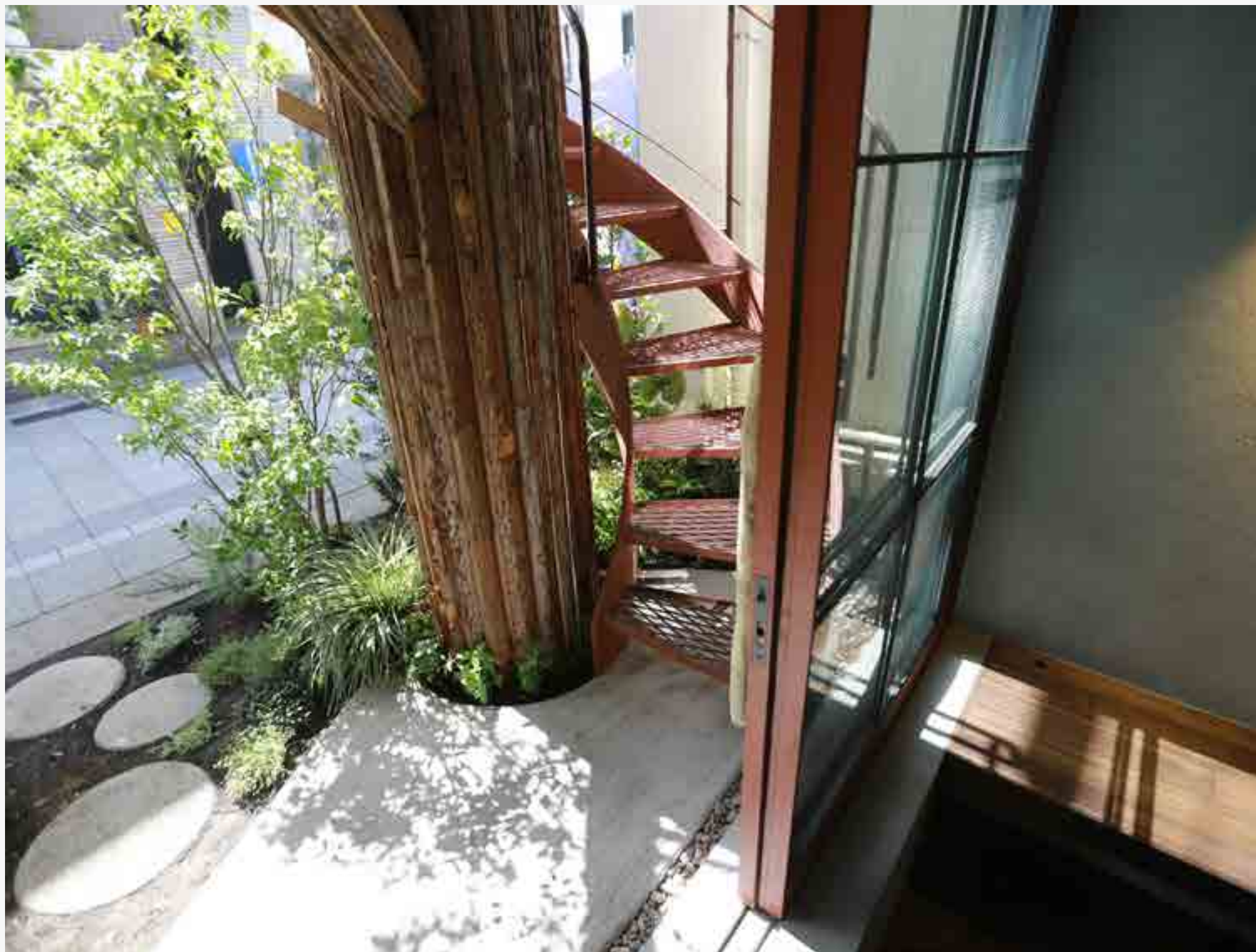
This is a house planned for a shopping street in Nakano Ward, Tokyo, which leads to a shrine. The situation of this shopping street, which is bustling with an unspecified number of people coming and going at all hours of the day, is like a natural forest. The safest place in a forest would be above the trees or in a cave (CAVE).

Nippon Paint Colour Codes

Nippe Aqueous Kenace | Pale blue1 (on-site colour mixing)
Nippe Aqueous Kenace | Pale blue2 (on-site colour mixing)
Nippe Aqueous Kenace | Pale blue3 (on-site colour 3 of 8 mixing)
Nippe Aqueous Kenace | Gray (on-site colour mixing)
Nippe Aqueous Kenace | Yellow-green (on-site colour mixing)
Nippe Aqueous Kenace | Light blue (on-site colour mixing)

Submitted by ————— Niko Design Studio





Architectural Category

(Corporate & Commercial Exterior)

Sekolah Ciputra Kasih Makassar

📍 South Sulawesi, Indonesia

In this project, colours were used to represent the entrepreneurship values that were expected to cultivate an entrepreneurial mindset among the students, teachers, and staff. It conducts the design beyond basic functionality, acting as a medium to encourage the client's aim to not only enhance the educational standards nationwide but also enhance the life skills, characters, and interaction capabilities taught through the entrepreneurship program. It is also used to give particular architectural effects to the design.

Nippon Paint Colour Codes

Nippon Paint Weatherbond | Walden White (NP OW 1010 P)
Nippon Paint Weatherbond | Smoking Gray (NP N 2045 T)
Nippon Paint Weatherbond | Disco Beat (NP YO 1211 A)
Nippon Paint Weatherbond | Absolute Yellow (NP YO 1113 A)
Nippon Paint Weatherbond | Benedict Blue (NP PB 1512 A)
Nippon Paint Weatherbond | Bedrock Bottom (NP N 1981 A)
Nippon Paint Bee Brand 1000 | Bedrock Bottom (NP N 1981 A)

Submitted by _____ KsAD Architects





Architectural Category

(Corporate & Commercial Exterior)

Cove D'Explorer

📍 Western Province, Sri Lanka

The Cove D'Explorer; the boutique hotel located at Wadduwa is a dream come true to the client. The client's brief to the architect was to design a hotel in a thin and long strip of land. Allowing only a 55 feet inlet, the site spread over 750 feet length perpendicular to the ocean. The client wished for a hotel that allows vistas of the ocean from most parts of the hotel. But the shape and layout of the land made it quite difficult to achieve.

Seizing this challenge, the architect has designed the building as a journey that takes the visitors towards the breathtaking beauty of the cove hidden at the end of the site. Using meaningful orchestration of spatial progression, the architect has created pleasurable special experiences that evoke a sense of curiosity within the user and moves them naturally from one space to another through the building and eventually to the beach. Inspired by the architecture of world famous architects; Casa Luis Barragan and Tadao Ando, Cove D'Explorer is a building with an emphasis on special progression, form, texture, colour, light, art and culture.

Nippon Paint Colour Codes

Nippon Paint Weatherbond Algae Guard | NE00077 Angelica PRO 0215

Nippolac Emulsion | Silver Clad Grey NE00011

Nippolac Emulsion | Minerva Grey NE00011

Submitted by _____ Nalaka Krishantha Architects





Architectural Category

(Corporate & Commercial Exterior)

Robinson Lifestyle Ban Chang

📍 Rayong, Thailand

Robinson Lifestyle Ban Chang is a department store. near the sea coast in the Rayong Province which is the center of many leading shops and around 200 brands. It is also a place that facilitates tourists. Because there are many activities available inside, such as a movie theater, it can be said to be a place that allows tourists or locals to take full advantage and relax without having to travel far at all.

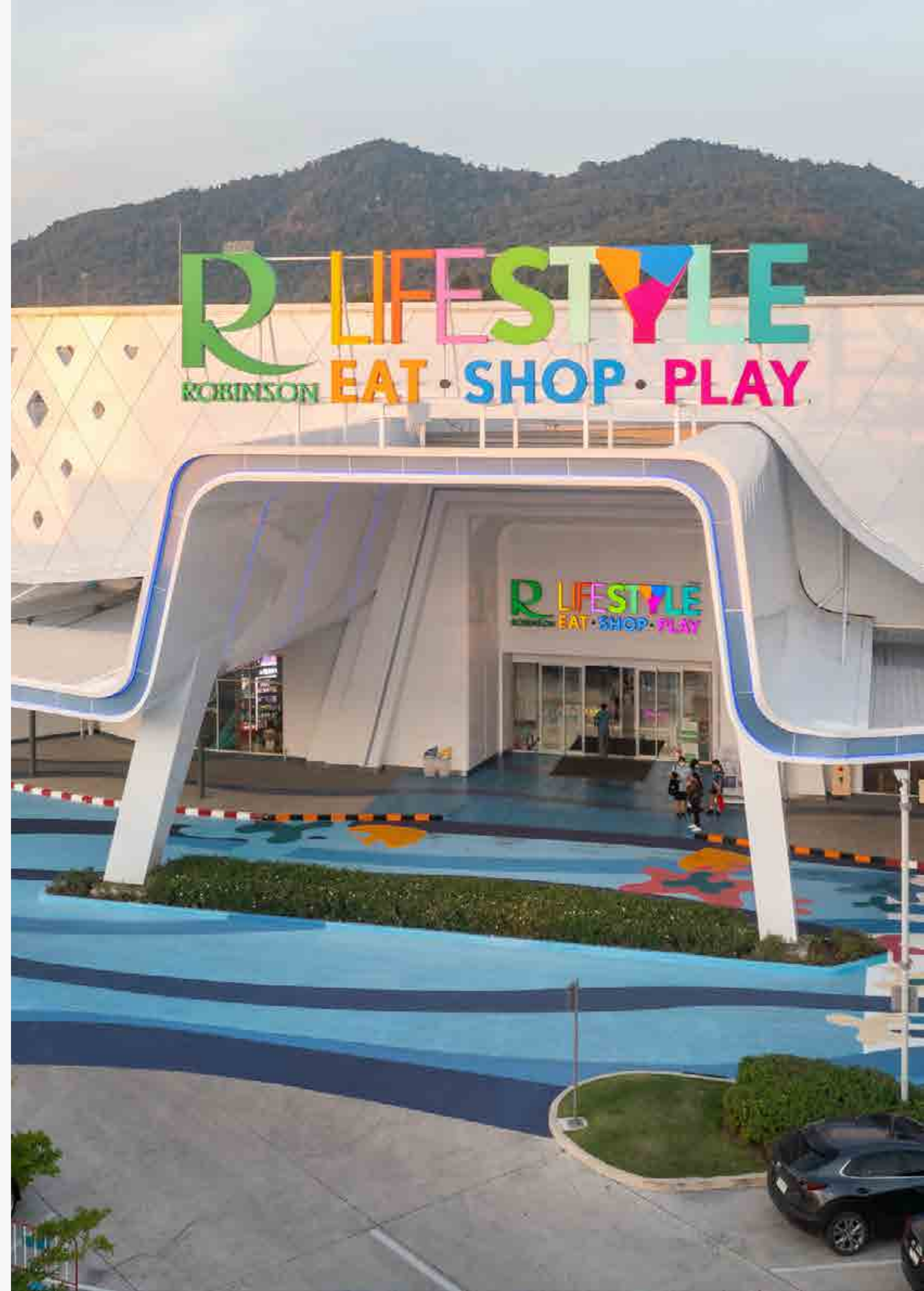
Nippon Paint Colour Codes

Nippon Paint Weatherbond Sheen | NP N 3073P

Nippon Paint Weatherbond Sheen | NP N 3079T

Nippon Paint Weatherbond Sheen | NP N 2003D

Submitted by _____ ARiA Design Architects







ARCHITECTURAL

Corporate & Commercial

2023 ENTRIES



Best of Architectural Category

(Corporate & Commercial Exterior)

Ciputra Kasih Semarang School

📍 Indonesia

Teaching students entrepreneurial skills empowers them to be proactive, resourceful, and confident individuals, well-prepared for the challenges and opportunities ahead of them. Ciputra Kasih Semarang school aims to plant the seeds of an entrepreneurial spirit in its students from an early age. This vision comes to life through the intentional choice of colours. Each bold hue reminds students of a different facet and value of entrepreneurship.

Nippon Paint Colour Codes

Sealer 5200 & 5400
Nippon tilelac
NP spotless OW 1010P - Walden White
NP PB 1512A - Benedict blue
NP YO 1211A - Disco Beat
NP YO 1113A - Absolute Yellow
NP spotless N 1981A - Bedrock bottom
NP N 2045T - Smoking Gray

Submitted by _____ KsAD Architects



Architectural Category

(Corporate & Commercial Exterior)

Al Jabbar Grand Mosque

📍 Indonesia

The beauty and uniqueness of Masjid Raya (Grand Mosque) Al-Jabbar has attracted the admiration of many. Visually, the dome construction was inspired by algebra (Aljabar) mathematics formulas. In a spiritual context, 'Al-Jabbar' means Mighty and Powerful God above all things, including human existence. Hence its name, Masjid Raya Al-Jabbar.

Submitted by _____ T. Yogya Karya (Persero)





Architectural Category
(Corporate & Commercial Exterior)

Jing Shan Primary School

📍 Singapore

Submitted by _____

CIAP Architects







ARCHITECTURAL

Residential Exterior

2024 ENTRIES



Best of Architectural Category
(Residential Exterior)

Skyblox Co-Living Housing

📍 Kuala Lumpur, Malaysia

Nestled in the bustling heart of Setapak, Kuala Lumpur, SkyBlox co-living housing emerges as a beacon of innovation and sustainability. This iconic development, with its eye-catching yellow cantilevered prefab structure, seamlessly merges the vibrancy of city life with serene natural elements, providing a home for over 500 individuals across 320 bespoke en-suite rooms.

Nippon Paint Colour Codes

Nippon Paint Weatherbond | Bright Smile (NP YO 1155 A)
Nippon Paint Weatherbond | Sadachbia (NP PRO 0525)
Nippon Paint Weatherbond | Weeping Angel (NP PRO 0523)

Submitted by _____ Tan Kwon Chong Architect



Architectural Category

(Residential Exterior)

Grand Persona Madani

📍 East Java, Indonesia

Elastex Mortar Board dan Elastex Puritan Black, warna abu-abu menyimpan makna positif yaitu melambangkan kemandirian, kestabilan, keseriusan, serta tanggung jawab. warna abu-abu sering dikaitkan dengan suasana hati yang tenang dan damai. Peralnya, warna ini kerap memberikan kesan kesejukan serta ketenangan seperti saat kita melihat awan mendung atau hujan turun. Kesan ketenangan dari warna tersebut juga dapat membantu meningkatkan produktivitas dan efisiensi kerja seseorang karena membuat mereka fokus tanpa terganggu oleh faktor lainnya.

Nippon Paint Colour Codes

Nippon Paint Elastex | Brilliant White
Nippon Paint Elastex | Mortar Board NPN2040P
Nippon Paint Elastex | Puritan Black NPN1982D
Nippon Paint Elastex | Espresso AC2135A 151A
Nippon Paint Fibercoating | Barrel Brown T121

Submitted by _____ PT Graneda





Architectural Category

(Residential Exterior)

Abode for Dissanayake

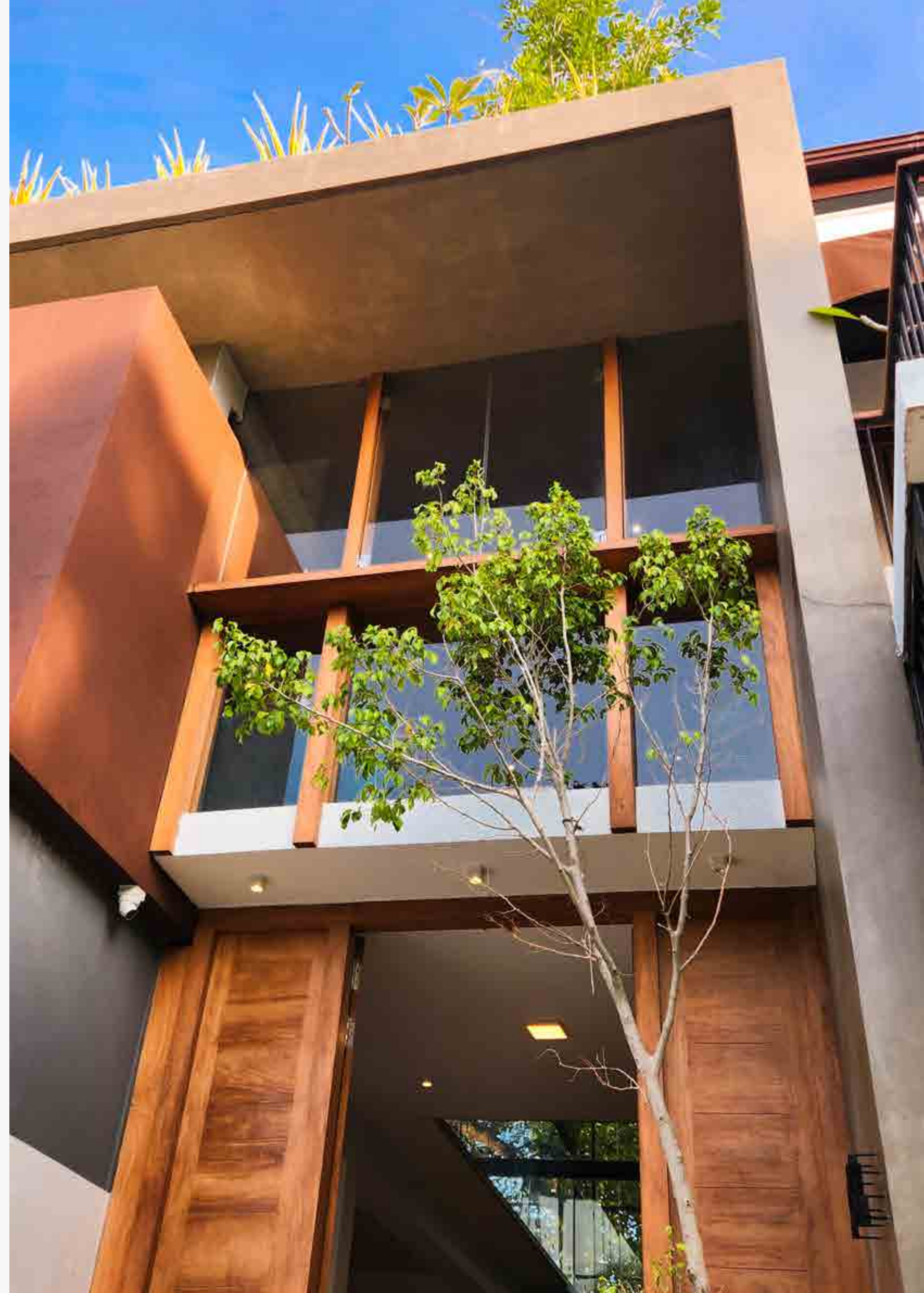
📍 Kalalgoda, Sri Lanka

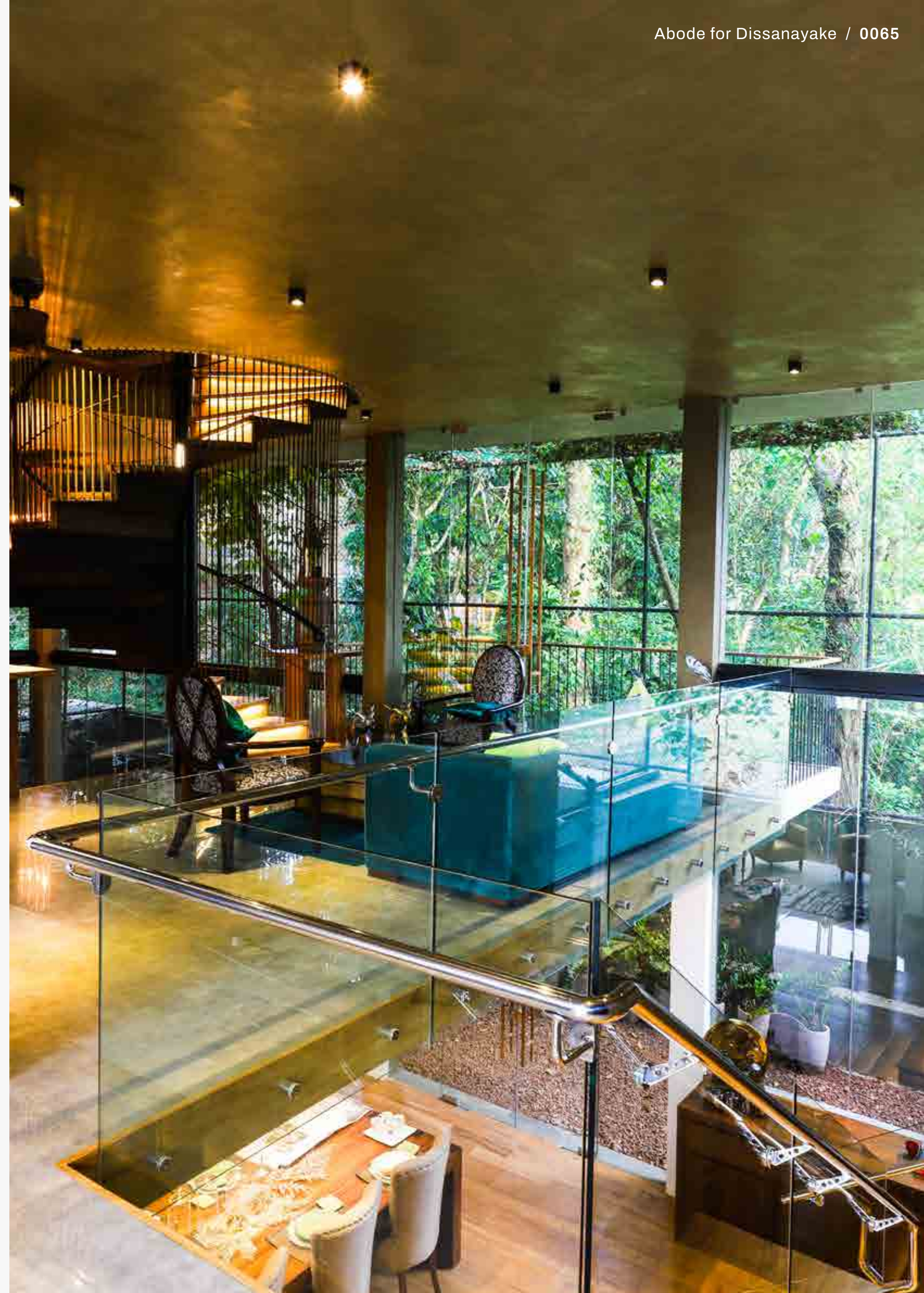
“The Dissanayake House” is designed as a large transparent volume to capture the beauty & essence of the trees & creepers in the backyard, as well as articulated solid cubes with more privacy for private living spaces to strengthen the behaviour pattern within family in a small private neighbourhood. Colour & texture of rusted iron spiral staircase, main feature of house that acts as sculptural element inspired us to develop colour theme for the house. Decaying Iron generates many colour shades reminding earthy colours, Reddish brown, Brown, Grey & Orange & shades of Yellow etc. These colours express some emotional feelings such as resilience, stability due to its’ earthy tones & at the same time comfort, warm & welcoming feelings. Therefore, colour strengths & quality of rust iron encountered to improve ambience for family behaviour.

Nippon Paint Colour Codes

Nippon Paint Weatherbond Advance | Brown Tresses NP N 3157A
Nippon Paint Epoxy Marine Paint | Clear
Nippon Paint Emulsion Medifresh | Pioneer Red NP R 1352D
Nippon Paint Weatherbond Advance | Elephant Ride NP N 3028T
Nippon Paint Emulsion Medifresh | Simply White NP OW 2146P
Nippon Paint Premium Wood Stain / 2K Wood Flooring | Natural NE00023

Submitted by _____ Sunil Gunawardena Associates





Architectural Category

(Residential Exterior)

U House - Sleek & Stylish

📍 Western Province, Sri Lanka

U House is a unique interpretation of Bauhouse and De Stijl architecture in creating an ideal nest for a modern and independent woman. Bauhouse principles are based on simplicity, sustainability, functionality and regularity. The De Stijl principles are based on abstraction of all forms into orthogonal lines and planes and the entire colour palette into primary colours, white and black. These principles frame the 3D form, elements, materials and colours, of the house. Same principles were used in creating the entire furnishing, lighting and home decor.

Nippon Paint Colour Codes

Nippon Paint Atom 2 in 1 | White

Submitted by _____ Nalaka Krishantha Architects







ARCHITECTURAL

Residential Exterior

2023 ENTRIES



Best of Architectural Category
(Residential Exterior)

Đai An Apartment

📍 Vietnam

Nippon Paint Colour Codes

3C-2T - Misty Rose
6C-1P - Pink Mums
8C-1P - Coral Tan
56C-3D - Aqua Pool
73C-2T - Gray Duck
36B-1T - Cane

Submitted by _____ **H.2 Workshop**



Architectural Category

(Residential Exterior)

Kim Keat Beacon

📍 Singapore

Re-imagining Toa Payoh's pioneering "Neighbourhood Principle" of planning & design in the 1960's, this design proposal seeks to introduce new and innovative ideas intrinsic in this public housing precinct, creating meaningful community centric spaces in this modern high-rise development, which will encourage the forming & strengthening of community spirit, bonding & values for all its multi-racial & multi-generational residents.

Submitted by ————— Kyooob Architects





Architectural Category

(Residential Exterior)

The Origin Ratchada-Ladprao

📍 Thailand

Submitted by ————— Oriental Studio Co.







INTERIOR DESIGN

Corporate and Commercial Interior

2024 ENTRIES



Best of Interior Design Category

(Corporate and Commercial Interior)

Auterra

📍 Singapore

Auterra is a wine retail and tasting space designed to be a sensorial experience that evokes the allure and flavours of wine. Drawing on the idea of terroir, the space is defined by soft sinuous curves bathed in earthy deep red tones, dividing the long shop space into various cavernous sections with a moody and atmospheric ambience that changes according to the time of day. The journey begins at the concierge table in the middle, where guests are invited to browse the wine list or to explore the selection physically in the cellar space at the back, with advice available from the sommelier. Guests can buy the wines off the cellar to take-out, but are welcome to casually enjoy them on the spot at within the warm and intimate ambience of one of the sitting areas and the standing counter spaces.

Nippon Paint Colour Codes

Nippon Paint Vinilex 5000 | Sculptor's Pride (NP N 3369 A)

Submitted by _____ Wynk Collaborative



Interior Design Category

(Corporate and Commercial Interior)

Tricholab @ Wheelock Place

📍 Singapore

TrichoLab, a hair growth and scalp treatment specialist in Singapore, intertwines the realms of medical science and natural healing. With a vision to cultivate an atmosphere that blends refreshment with tranquility, two key Nippon Paint colors, Affectionate Hug and Snowbush Rose, are at the heart of this endeavor, fostering an environment of harmony, comfort, and renewal. These carefully selected colors form the cornerstone of an environment crafted to evoke harmony, comfort, and renewal, aligning seamlessly with TrichoLab's ethos.

Nippon Paint Colour Codes

Nippon Paint | Affectionate Hug NP R 2364 P
Nippon Paint | Snowbush Rose NP OW 1039 P

Submitted by _____ Paper Plane Architects





Interior Design Category

(Corporate and Commercial Interior)

Cult Design Showroom

📍 Singapore

Located inside a conserved traditional shophouse at Club Street, this is the flagship showroom for CULT — a furniture brand originated from Australia. It carries a variety of products, ranging from furniture, lighting, carpets and home accessories mainly from 3 major brands -- & Tradition, Hay and Nau. CULT has their own contemporary branding identity with a strong crimson red as corporate color. The 3 major brands each have their own corporate colors and presentation standards as well. How do we present 3 major brands products along with a myriad of smaller accessories in a space of 100m2, while respecting the local heritage context and amplifying the branding of CULT? That is the design challenge that the team undertook.

Nippon Paint Colour Codes

Nippon Paint | VIOLET WHISPER NP OW 1085 P

Nippon Paint | SHITAKE NP N 1873 P

Nippon Paint | LIBERTY BLUE NP PB 1533 A

Nippon Paint | HOME SWEET HOME NP R 1271 P

Submitted by _____ Paper Plane Architects





Interior Design Category
(Corporate and Commercial Interior)

Modern Second Floor

📍 Kanagawa Prefecture, Japan

The colour changes across the wall to create a contrast between the slightly tense salon space and the relaxing shower. The space salon space can also transform into a photo studio or gallery. The light pink was chosen to express the client’s open-mindedness, love of surfing, and love of nature and the ocean.

Nippon Paint Colour Codes

Nippon Paint | Water-based Ken Ace | 09-80F
Nippon Paint | Water-based Ken Ace | 22-80A

Submitted by _____ ure





Interior Design Category
(Corporate and Commercial Interior)

The Quest School

Tamil Nadu, India

Quest is a learning center for children between the ages 8 to 14, located in the coastal city of Chennai in southern India. Children and colour are almost synonymous. Whenever there is any representation with children, it is always with colour. And as a contrast we at KSM are great lovers of concrete.

Nippon Paint Colour Codes

Nippon Paint Spotless NXT| Jungle Foilage (NP BGG 2636 A)
Nippon Paint Spotless NXT | Bustling Blue (NP PB 2847 T)
Nippon Paint Spotless NXT | Circus Top (NP YO 1134 A)
Nippon Paint Spotless NXT | Matcha Green (NP BGG 1646 D)
Nippon Paint Spotless NXT | Feather White (NP OW 2158 P)

Submitted by ————— KSM Architecture





Interior Design Category

(Corporate and Commercial Interior)

Itomachi Hotel 0

📍 Shikoku, Japan

When creating ITOMACHI HOTEL 0, a vast expanse of farmland in Saijo City in Ehime Prefecture was converted to built Japan's first zero energy hotel, one of the Ito projects aiming for and working towards regional revitalization.

The topography of this region is such that the rain that falls in the mountain areas is gathered as subsoil water, thus forming a natural water supply, which is rare in Japan. Each community and household drill its own natural wells called "uchinuki" for the groundwater it uses, so there is no need for a water supply system, infrastructure usually provided in urban areas in Japan. Naturally, groundwater is used for all of the water used by the hotel. This cool and clear water, selected as one of the 100 best waters in Japan, is entrenched in the lives of the people of Saijo and forms their unique culture.

Nippon Paint Colour Codes

NIPPE ファインウレタンU100 | 45-70B

NIPPE ファインウレタンU100 | 35-70A

NIPPE ファインウレタンU100 | 65-40B

Submitted by ————— Dugout Architects





Interior Design Category

(Corporate and Commercial Interior)

Ceyline Holdings

📍 Western Province, Sri Lanka

The Finance and HR departments of Ceyline Holdings (PVT) Ltd are strong foundations in the complex web of organizational dynamics, with separate but related domains of expertise. This project aims to visually express and appreciate each department's distinct character. The story is told through a color scheme that was carefully chosen, with green embracing the HR department and yellow bringing life to the Finance department.

Nippon Paint Colour Codes

Nippon Interior Paint | NP AC 2120

Nippon Interior Paint | NP AC 2050

Nippon Interior Paint | Brilliant White

Submitted by ————— Spaceus Architecture Studio





Interior Design Category

(Corporate and Commercial Interior)

The Commune

📍 Colombo, Sri Lanka

The colours introduced followed through the various details in the space allowing to differentiate between the various functions and demarcations of space. Yellow was used for the private access spaces and Cobalt blue was used in the common elements of the space including vegetation boxes, rent-able meeting spaces and the phone booth. The existing low ceiling was stripped out revealing the guts of the building and adding much-needed volume to the space. The common services and ducting that was exposed as a result, were also highlighted using cobalt blue to carry the theme through. These accent colours introduced were complemented by using elements painted in white, natural clay brick, and natural cement along with the lush indoor vegetation dotted around the space.

Nippon Paint Colour Codes

Nippon Paint Nippolac Emulsion | Brilliant White
Nippon Paint Super Gloss Enamel | Jasmine Yellow
Nippon Paint Super Gloss Enamel | Navy Blue (Int)
Nippon Wood Stain Premium - Water Based | Natural Mahogany

Submitted by _____ Island Studio





Interior Design Category
(Corporate & Commercial Interior)

Urban Designer Collection - Pop & Funky

📍 Pulau Pinang, Malaysia

Step into a world where creativity knows no bounds, and every corner bursts with energy and vibrancy. Our pop & funky interior design concept celebrates individuality, expression, and a fearless embrace of color and form. At the heart of this Airbnb project lies a striking wall mural adorned with inorganic shapes in bold hues of orange and turquoise, creating a visually captivating focal point that sets the tone for the entire space. Join us on a journey of exploration and self-expression as we delve into the electrifying world of pop & funky design.

Nippon Paint Colour Codes

- Nippon Paint Easy Wash | Ultra Smooth NP OW 1020 P
- Nippon Paint Easy Wash | Hush White NP OW 1003 P
- Nippon Paint Easy Wash | Soothing Blue NP OW 1057
- Nippon Paint Easy Wash | Blue Scarf NP BGG 1586 P
- Nippon Paint Easy Wash | Basic Blue NP BGG 1580 P
- Nippon Paint Easy Wash | Persian Blue NP BGG 1588 T
- Nippon Paint Easy Wash | Pioneer Red NP R 1352 D
- Nippon Paint Easy Wash | Orange Bedder NP YO 1198 D
- Nippon Paint Easy Wash | Orange Torch NP YO 1204 A
- Nippon Paint Easy Wash | Slate Crest NP BGG 1807 D

Submitted by _____ Creteart Design Studio





Interior Design Category
(Corporate & Commercial Interior)

Robinson Lifestyle Ban Chang

📍 Pulau Pinang, Malaysia

Colour plays a pivotal role in shaping the atmosphere and mood of this Airbnb retreat, with pastel green, pastel purple, and pastel beige serving as the cornerstone of the design palette. Pastel green, reminiscent of lush gardens and springtime blossoms, evokes feelings of freshness, vitality, and harmony. Pastel purple exudes a sense of luxury, sophistication, and creativity, adding a touch of regal elegance to the space. Pastel beige provides a neutral backdrop that anchors the vibrant hues and creates a sense of balance and tranquillity. Together, these colours create a cohesive and inviting atmosphere that envelops guests in warmth and comfort.

Nippon Paint Colour Codes

- Nippon Paint Easy Wash | Rhyme & Reason NP BGG2772 P
- Nippon Paint Easy Wash | Morning Glory NP PB 2930 P
- Nippon Paint Easy Wash | Maple Syrup NP N 3210 P
- Nippon Paint Easy Wash | Safari Adventure NP N 3191T
- Nippon Paint Easy Wash | Saddle Up NP N 3192 D
- Nippon Paint Easy Wash | Azuki Coee NP N 1862 A
- Nippon Paint Easy Wash | Quite Prose NP BGG 2770 P
- Nippon Paint Easy Wash | Sunken Treasure NP BGG 2775 D
- Nippon Paint Easy Wash | Nuptial Knot NP BGG 2927 P
- Nippon Paint Easy Wash | Glorious Monent NP PB 2933 A
- Nippon Paint Easy Wash | Bonito Flakes NP N 3208 P







INTERIOR DESIGN

Corporate and Commercial Interior

2023 ENTRIES



Best of Interior Design Category

(Corporate and Commercial Interior)

LikasVue Sales Gallery

📍 Malaysia

A project whose design refreshingly departs from usual showroom conventions, using bright colours to attract passersby and providing a lively, playful and conducive environment to discuss sales. The protagonist colour pays homage to the existing buildings that the LikasVue development will replace, whilst a meaningful mini photography exhibition of the soon-to-be demolished buildings on site ensures that its memory won't be forgotten.

Submitted by _____ Chan & Shahrman Arkitek



Interior Design Category

(Corporate & Commercial Interior)

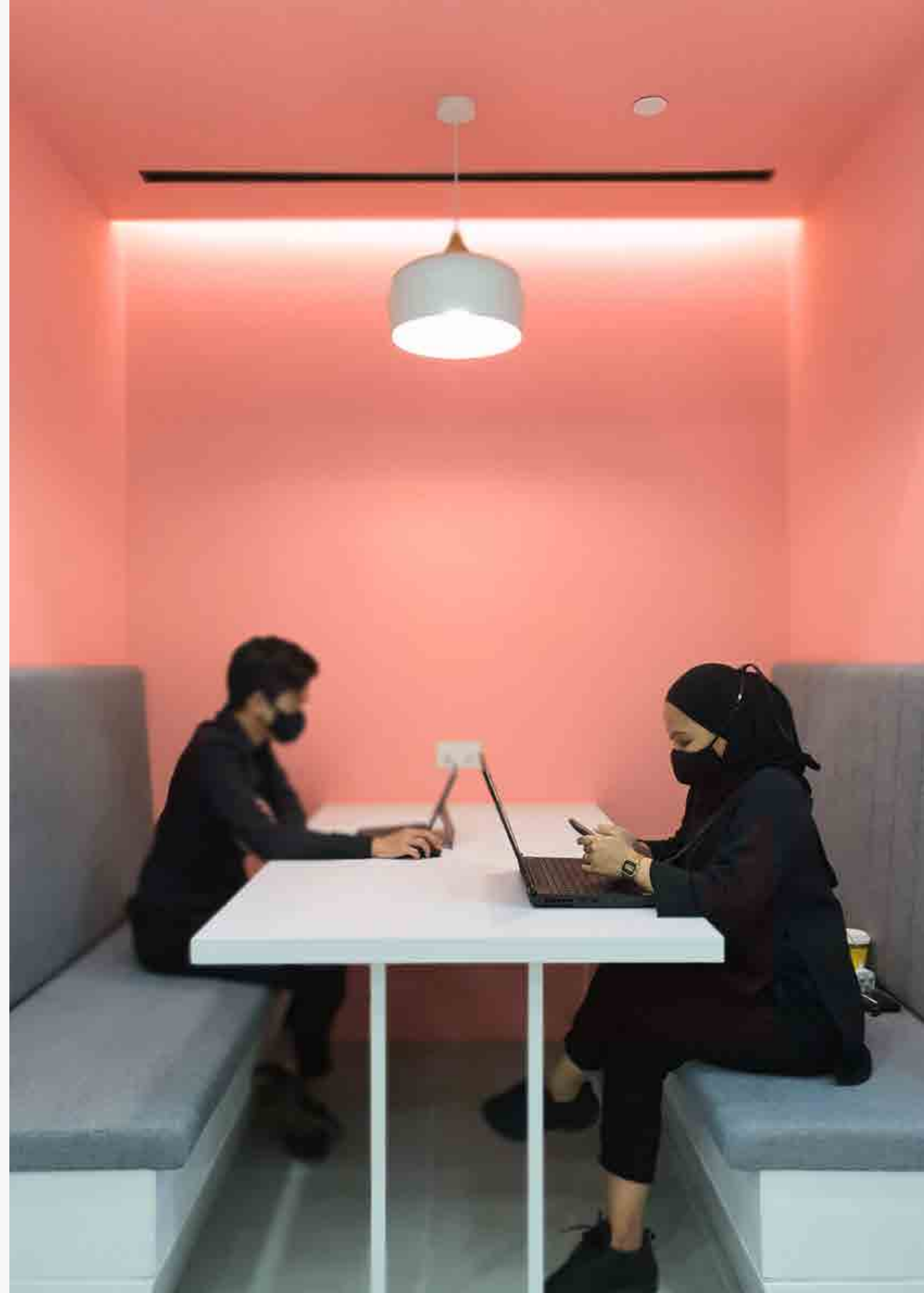
Roche Diagnostics Office

📍 Singapore

Roche, a global pioneer in pharmaceuticals and diagnostics, requested a redesign of their office in Singapore. The result was a minimalistic and muted interior design, without excessive elements. The monochromatic vibe, with the touches of green, coral pink and light blue were subtly introduced throughout the office.

To add warmth, natural finishes like wood were used throughout the workplace. A moss wall was also included in the entrance area while plants that have low water consumption were arranged throughout the office not only for aesthetics but also as space dividers.

Submitted by _____ SCA Design





Interior Design Category

(Corporate & Commercial Interior)

Avery Dennison Office

📍 India

Submitted by ————— Aadyam Design Studio





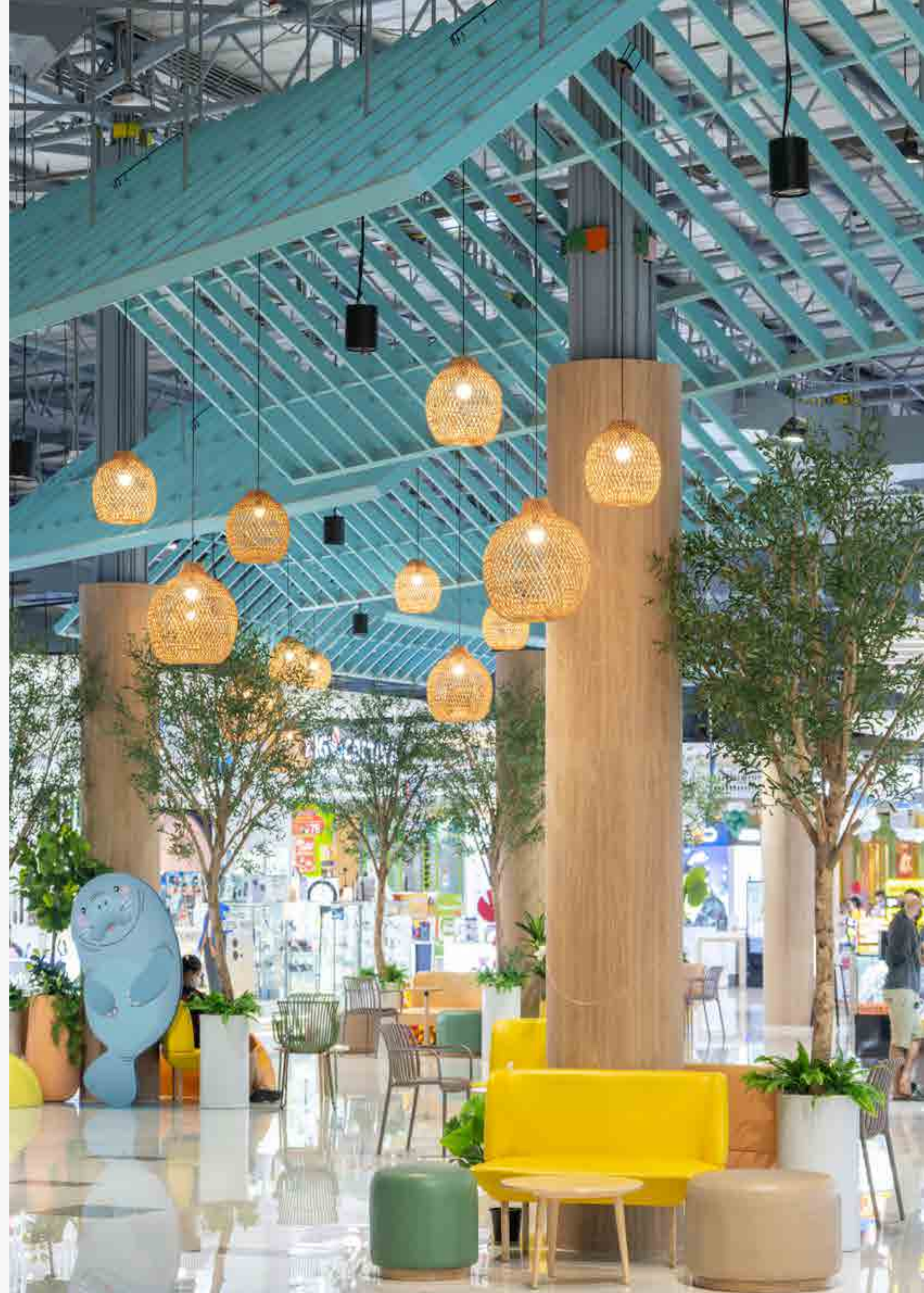
Interior Design Category

(Corporate & Commercial Interior)

Robinson Lifestyle Ban Chang

📍 Rayong, Thailand

Submitted by ————— ARiA Design Architects





Interior Design Category

(Corporate & Commercial Interior)

カフェ

📍 Japan

Submitted by 木元洋佑建築設計室





Interior Design Category

(Corporate & Commercial Interior)

Warehouse Market Tokyo, ReBar

📍 Japan

The name Warehouse Market Tokyo ReBar derives from the rebar used. Normally these bars are embedded to create reinforced concrete with high tensile strength. Here, bare bars trace the perimeter of the room. A relaxing light blue sets the tone of the inner area, with the partition being a crystalline lattice of white bars.

Submitted by _____ Organic Design Inc.





Interior Design Category

(Corporate & Commercial Interior)

Bivo Deluxe Show Unit

📍 Indonesia

Submitted by ————— Gozco Land





Interior Design Category

(Corporate & Commercial Interior)

Phillips DA Office

📍 Türkiye

Submitted by ————— Jeyan Ülkü Architects





Interior Design Category

(Corporate & Commercial Interior)

Abbvie Office

📍 Türkiye

Submitted by ————— Jeyan Ülkü Architects





Interior Design Category

(Corporate & Commercial Interior)

İş Mekan

📍 Türkiye

Submitted by _____

I-AM





Interior Design Category

(Corporate & Commercial Interior)

Office in Istanbul

📍 Türkiye

Submitted by ————— Jeyan Ülkü Architects





Interior Design Category

(Corporate & Commercial Interior)

Talu Tekstil

📍 Türkiye



Submitted by ————— XYZ Design



Interior Design Category

(Corporate & Commercial Interior)

Tjarita Coffee

📍 Indonesia

The green colour palette in this design is inspired by the location of the project- a military housing area predominantly featuring green-toned buildings. Selected green hues modernise the surrounding colour palette and create new shades of green, such as matcha green, mint green, and sage green, which are the primary colours of this design. A light grey colour is also used as an accent in the finishing of the ironworks.

Submitted by _____ Atelier NARK+







INTERIOR DESIGN

Residential Interior

2024 ENTRIES



Best of Interior Design Category

(Residential Interior)

鬼丸さんの家 Onimaru House

📍 Tokyo, Japan

It is a courtyard-style house with an independent studio. The site is located between a neighborhood commercial district and a type of low-rise residential district,

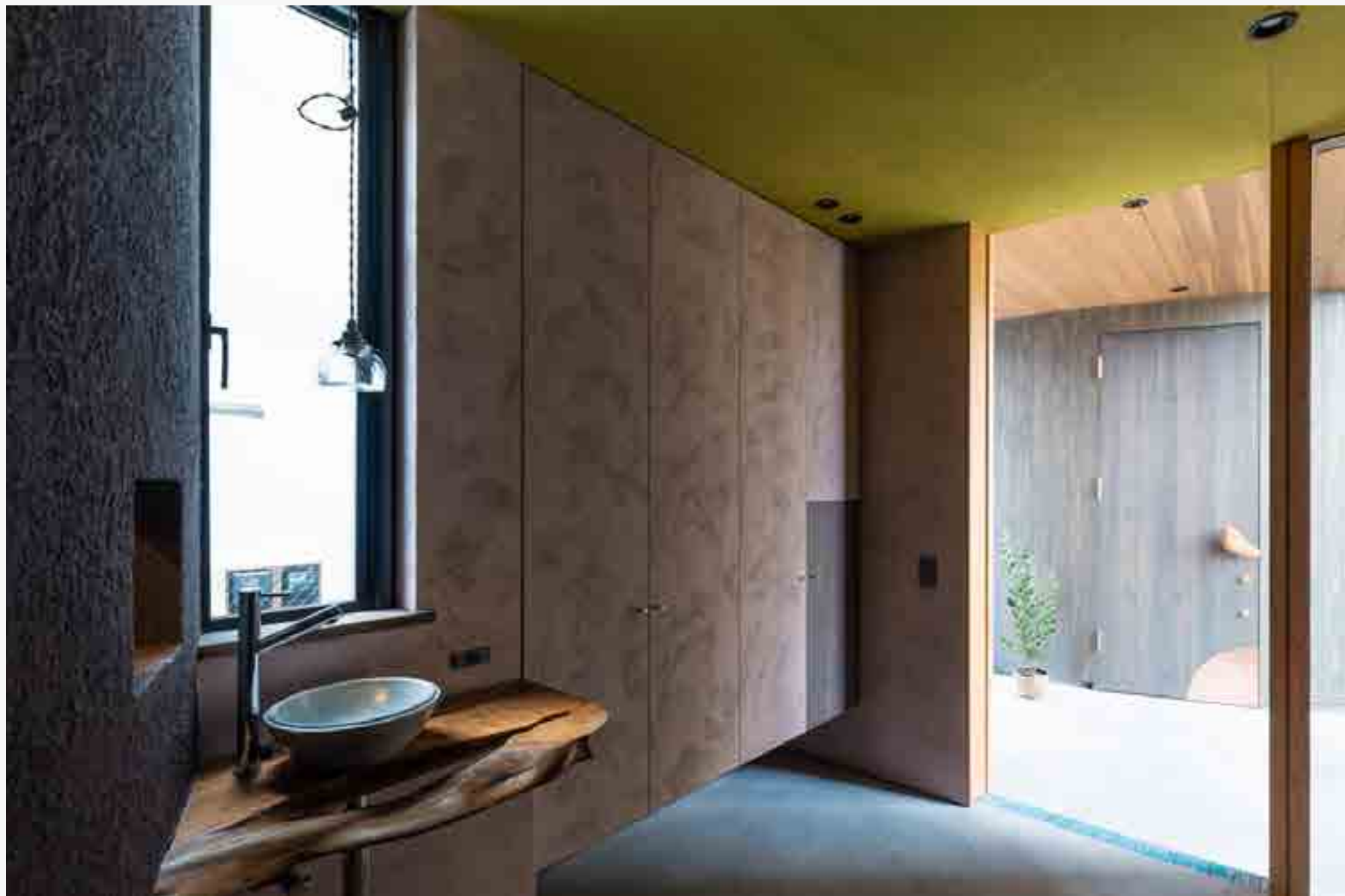
A tall condominium stands on the back side of the site. Moreover, it is a flagpole site. Therefore, the house was designed as a courtyard-style house.

The entire house is arranged in a U-shaped volume surrounding the courtyard, The first step was to create an image of privacy.

Nippon Paint Colour Codes

Nippe Aqueous Kenace | Yellow-Green 1 (customised)
Nippe Aqueous Kenace | Yellow-Green 2 (customised)
Nippe Aqueous Kenace | Blue (customised)
Nippe Aqueous Kenace | Pink (customised)
Nippe Aqueous Kenace | Gray (customised)
Nippe Aqueous Kenace | Purple (customised)
Nippe Aqueous Kenace | Moss Green (customised)
Nippe Aqueous Kenace | Red (customised)
Nippe Aqueous Kenace | Emerald Blue (customised)
Nippe Aqueous Kenace | Yellow (customised)

Submitted by _____ Niko Design Studio



Interior Design Category
(Residential Interior)

The Juanda

📍 East Java, Indonesia

Bivo Deluxe is designed with a minimalist and masculine facade. It’s designed to provide ample living space for a family with one to two children. The first floor has an open living-dining area, one bedroom, a bathroom and a backyard. The second floor has two bedrooms and one bathroom. The building’s layout is designed to provide space for all sorts of family activities. Its interior uses neutral and bright colours to buildthe mood and value in each room.

Nippon Paint Colour Codes

- Nippon Paint Vinilex Interior | Green Montage NP BGG 1752 T
- Nippon Paint Vinilex Interior | Cedar Scent NP R 1389 P
- Nippon Paint Vinilex Interior | Coachlight NP YO 1168 T
- Nippon Paint Vinilex Interior | Hush White NP OW 1003 P
- Nippon Paint Vinilex Interior | Fire Wood NP N 1856 D
- Nippon Paint Weatherbond | Whsipering White NP OW 1001 P
- Nippon Paint Weatherbond | Fire Wood NP N 1856 D

Submitted by ————— Gozco Land Development





Interior Design Category
(Residential Interior)

Curved Home

📍 Singapore

Step into a world where comfort meets elegance, where every curve whispers tranquility, and every hue speaks of warmth. This interior design masterpiece invites you to unwind and embrace the serenity of home.

As you enter, you're greeted by a seamless transition from the living area to the bedroom, where light dances along the walls, casting soft, inviting shadows. The gentle curve of the space creates a fluidity that soothes the soul, while a palette of light colors bathes the room in a serene glow.

Nippon Paint Colour Codes

Nippon Paint Vinilex 5000 | Sweet Dreams NP R 1257 P
Nippon Paint Vinilex 5000 | Flight Of Doves NP N 3068 P
Nippon Paint Bodelac 9000 | Sail White 1199

Submitted by _____ Yangs Inspiration Design





Interior Design Category
(Residential Interior)

Teck Ghee Parkview

📍 Singapore

In this apartment, every detail contributes to creating a space that seamlessly combines comfort and style, resulting in an atmosphere that exudes cosy chic. While adhering to the traditional Scandinavian colour palette, the inclusion of green accents in the living room and piano area introduces a refreshing twist that catches the eye and adds depth to the overall design. These subtle pops of colour breathe new life into the space, creating visual interest and warmth.

Nippon Paint Colour Codes

Nippon Paint Vinilex 5000 | Birch Patina NP N 1852 P
Nippon Paint Vinilex 5000 | Dockyard NP N 3095 P
Nippon Paint Bodelac 9000 | Cloud formation NPN1971P

Submitted by _____ Starry Homestead





Interior Design Category

(Residential Interior)

Teck Whye Lane

📍 Singapore

In crafting the design of this space, the incorporation of pink accents serves as a key element in infusing the environment with a playful and charming allure. These pops of pink not only adhere to the owner’s preference for a pink-themed design but also contribute to establishing a warm and inviting ambience that envelops visitors upon entry. Drawing inspiration from the minimalist elegance of Scandinavian design principles, the space seamlessly integrates clean lines and soft hues.

Nippon Paint Colour Codes

Nippon Paint Vinilex 5000 | Birch Patina NP N 1852 P
Nippon Paint Vinilex 5000 | Dockyard NP N 3095 P
Nippon Paint Bodelac 9000 | Cloud formation NPN1971P

Submitted by ————— Starry Homestead





Interior Design Category
(Residential Interior)

Dwelling at Pamburana

📍 Southern Province, Sri Lanka

The client’s primary objective for this project was straightforward—to create a haven where they could unwind after a day’s work.

In response to this, the architect intended to craft an interior space that seamlessly merged with the limited indoor and outdoor areas. This deliberate decision amplified the significance of the interior, transforming it into a focal point that radiates a sense of serenity. The careful selection of colours and materials played a pivotal role in creating a soothing ambiance, enhancing the overall living experience.

Nippon Paint Colour Codes

Nippon Paint Odour-less Emulsion | Brilliant White NE0008

Submitted by _____ Arcsquare





The Biophilic Loft

Colombo, Sri Lanka

Biophilic Loft is the project that kicked off the Island Studio - Small Projects Series, in which we explore the possibilities of compact spaces in a global environment with ever-shrinking per-capita space availability. This project explores the possibilities of sustainable reuse, material life-cycle and up-cycling, economic use of space and other similar concepts that attempt to make every inch of a limited space more efficient. In working with such a compact space, the skilful use of colour is a primary concept that ties this project together.

Nippon Paint Colour Codes

- Nippon Paint Nippolac Emulsion | Brilliant White
- Nippon Paint Super Gloss Enamel | Sylven Green
- Nippon Paint Super Gloss Enamel | Bright Green
- Nippon Wood Stain Premium - Water Based | Natural Mahogany

Submitted by _____ Island Studio





Interior Design Category

(Residential Interior)

Modern 80's Eclectic

📍 Singapore

I approached the brief for the project with a deep sense of responsibility and a desire to create a space that would meet the client's specific requirements and needs. I recognized that the color scheme and selection would play a critical role in achieving the desired look and feel of the home.

Thus, I embarked on a detailed consultation process with the client to gain a deep understanding of their preferences and styles. I asked questions about their favorite colors, textures, and materials, and used this information to create a mood board that would guide every aspect of the project.

Nippon Paint Colour Codes

Nippon Paint | Whitechoc Bread NP N 3213 P

Nippon Paint | Night Ember NP R 2384 A

Nippon Paint | Young Bud NP BGG 1741 P

Nippon Paint | Little Lullaby NP BGG 1761 P

Submitted by _____ Charlotte's Carpentry





Interior Design Category
(Residential Interior)

Crimson Falls

📍 Kuala Lumpur, Malaysia

This design narrative, marrying luxury with modernity, unfolds like a symphony of color, texture, and light. It beckons you to immerse yourself in its tranquil embrace, a haven where contemporary living finds its ultimate expression. It is a space that draws inspiration from every corner of the world, a testament to the enduring allure of timeless elegance and the endless pursuit of refinement.

Nippon Paint Colour Codes

Nippon Paint EasyWash | Rosy Dreams (NP R 1344 A)
Nippon Paint EasyWash | White Lace (NP OW 1004 P)

Submitted by _____ **Boldndot**







INTERIOR DESIGN

Residential Interior

2023 ENTRIES



Best of Interior Design Category
(Residential Interior)

Property in Singapore

📍 Singapore

Submitted by _____ Weiken.com



Interior Design Category

(Residential Interior)

Maison 1

📍 Singapore

The restoration of this 3 storey house to accommodate a three-generation family of 8 sees the design team retrofit the interior spaces based on the concept of boutique hospitality - where every en-suite bedroom is designed to offer a distinct personality and intimate experience for each family member - while catering to individual functional requirements. Each room is made bespoke, yet every one adheres to one unifying scheme.

Submitted by _____ KNQ Associates





Interior Design Category

(Residential Interior)

Property in Woodlands

📍 Singapore



Submitted by _____ Weiken.com



Interior Design Category

(Residential Interior)

Flat in Sengkang

📍 Singapore

Submitted by ————— Weiken.com





Interior Design Category

(Residential Interior)

Seraya Ville

📍 Singapore

Submitted by _____ Linear Space Concepts





Interior Design Category

(Residential Interior)

Meet Purple

📍 Taiwan

Submitted by ————— Chiun Ju Interior Design





PUBLIC SPACES

2023 ENTRIES



Best of Public Spaces

Dementia Friendly Wayfinding Project

📍 Singapore

A project whose aim is to create a system that assists seniors and those afflicted with dementia in navigating around their neighbourhood safely and independently. Building upon research to ascertain the needs of the elderly and dementia patients, this project's wayfinding solution involves zoning areas by colour and symbol, as well as developing a signage system that allows easy spatial recognition.

The residential blocks were sectioned into zones and each was assigned a bold colour – either red, green or blue. The zone colours were painted on the facade of the blocks, along with block numbers prominently displayed in large fonts, making them easily legible from a distance.

Nippon Paint Colour Codes

BS 04 E 53 - Flaming Red
BS 14 E 53 - Jade Lime
BS 18 E 53 - Bright Blue

Submitted by _____ IMMORTAL







Public Spaces Category

Disabled Friendly Park in Bengaluru

📍 India

Submitted by ————— RR Architects & Associates





HYBRID SPACES

2024 ENTRIES

Architecture & Interior Design Category

(Residential Exterior & Interior)

The Tropical Allure - The Frangipani House

📍 Padukka, Sri Lanka

The villa Frangipani sits on a 160 perch land in a quiet and tranquil neighborhood in Padukka. The primary objective was to refurbish the old house by converting the existing mundane spaces into user-friendly spaces that complement function. Hence the scope revolved around revitalizing the interior while also introducing a multifunctional space with a pool and relevant facilities to the exterior.

Nippon Paint Colour Codes

Nippon Paint Super Matt Enamel | Green Space (NP 2703 D)

Nippon Paint Weatherbond | White (BS 00E55)

Nippon Paint Weatherbond AlgaeGuard | White (BS 00E55)

Nippon Paint Odour~less All-in-1 | Angel Pink (1162)

Nippon Paint Wood Care System

Submitted by ————— Ironi Padmaperuma Architects





Spectrum House

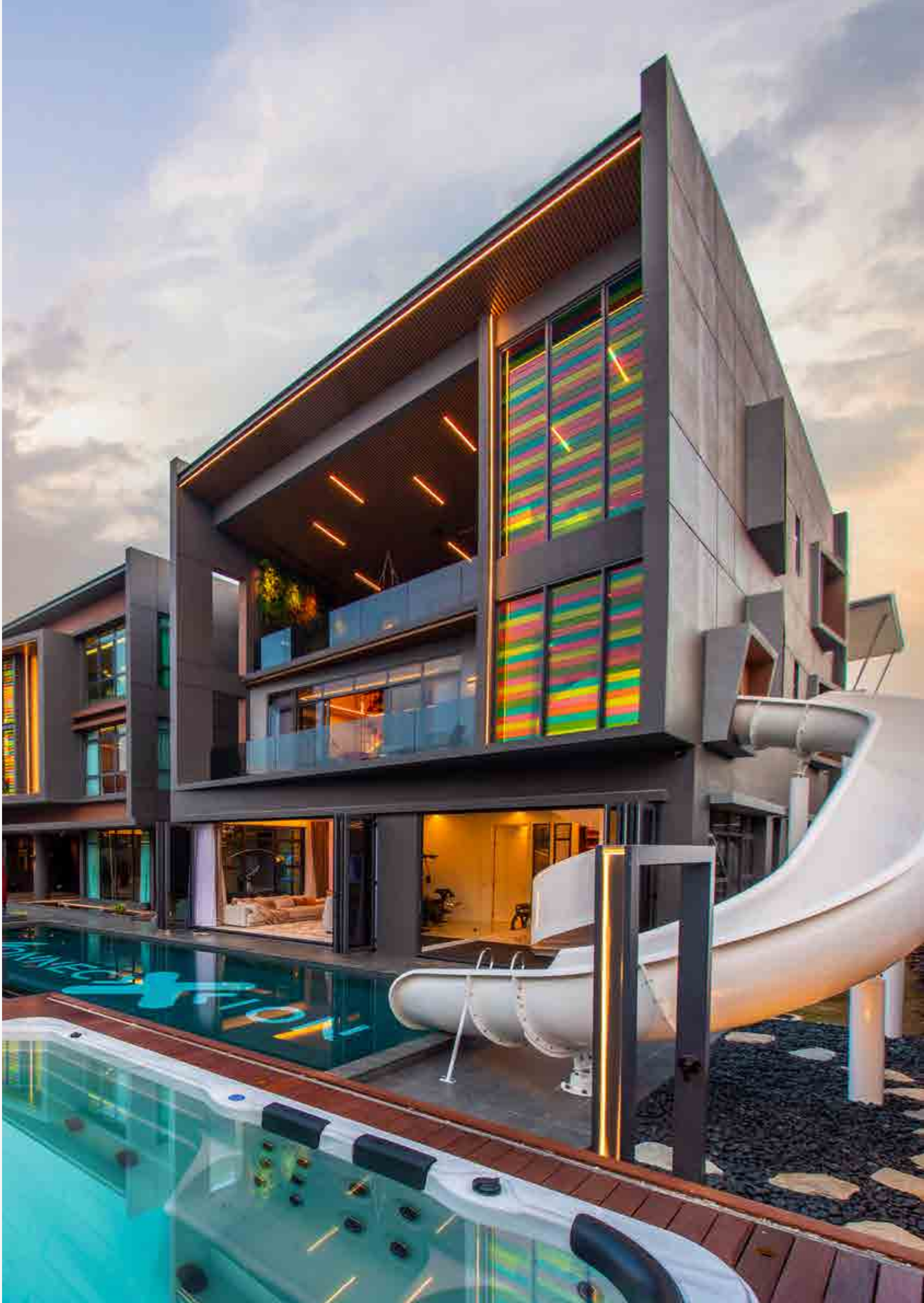
📍 Selangor, Malaysia

Spectrum House unfolds as a living tapestry where colour isn't just a visual element but a vessel for family, love, and cherished memories. The exterior, draped in a sophisticated dark grey, conceals a vibrant heart—a living gallery pulsating with spectrum colours. These hues encapsulate the essence of family experiences, symbolizing the warmth and diversity that define the heart of this residence. The architectural journey within is a deliberate transition from cool to warm tones, guiding occupants through spaces that not only serve their function but also resonate with the shared moments that build family bonds.

Nippon Paint Colour Codes

- Nippon Paint Weatherbond | Black Pearl (NP PRO 0560)
- Nippon Paint Weatherbond | Highlight Grey (NP PRO 0557)
- Nippon Paint Weatherbond | Sticky Toffee (NP PRO 0344)
- Nippon Paint Odourlite Soft Matt Finish | Bedrock Bottom (NP N 1981 A)
- Nippon Paint Super Matex | White (9102)

Submitted by _____ Tan Kwon Chong Architect





Architecture & Interior Design Category

(Residential Exterior & Interior)

Skyblox Co-Living Housing

📍 Kuala Lumpur, Malaysia

The essence of SkyBlox's design, encapsulated in the "Back to Nature" theme, is a deliberate fusion of spaces that effortlessly brings the outdoors indoors. The strategic employment of a colour palette featuring yellow, dark grey, and light grey is central to this vision, transforming living areas into hubs of warmth and cheerfulness.

Yellow, representing energy and optimism, is thoughtfully applied throughout SkyBlox, serving as a visual magnet and infusing spaces with a dynamic vibrancy. Notable features like an upcycled container, repurposed into a striking staircase and adorned in this lively hue, resonate with the development's inventive ethos, injecting a joyful spirit.

The greys provide a contemporary and sophisticated contrast, allowing the yellow to shine. This selection harmonises with natural construction materials, creating an aesthetically pleasing balance that mirrors the project's sustainable living commitment.

Nippon Paint Colour Codes

Nippon Paint Weatherbond | Bright Smile (NP YO 1155 A)

Nippon Paint Weatherbond | Sadachbia (NP PRO 0525)

Nippon Paint Weatherbond | Weeping Angel (NP PRO 0523)

Submitted by _____ Tan Kwon Chong Architect



Company _____ Tan Kwon Chong Architect



creativecolourawards.com

Celebrating Colour Excellence

